

# Plans and Prices - CABINS

# WENDY LANE CC

Established in 1993 - Eighteen years experience building your peace of mind

01.01.2012



Tel: +27 13 755 2408 Fax: +27 13 752 4890 email: roy@timberco.co.za web: www.wlcc.co.za  
3 Christie Cres, Vintonia xt 2, Nelspruit, Mpumalanga P O Box 5452, Nelspruit 1200

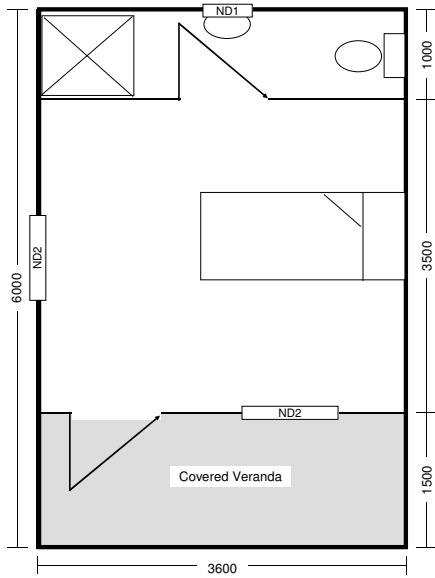


## STANDARD TIMBER HOMES SHELL PRICES - INCL VAT

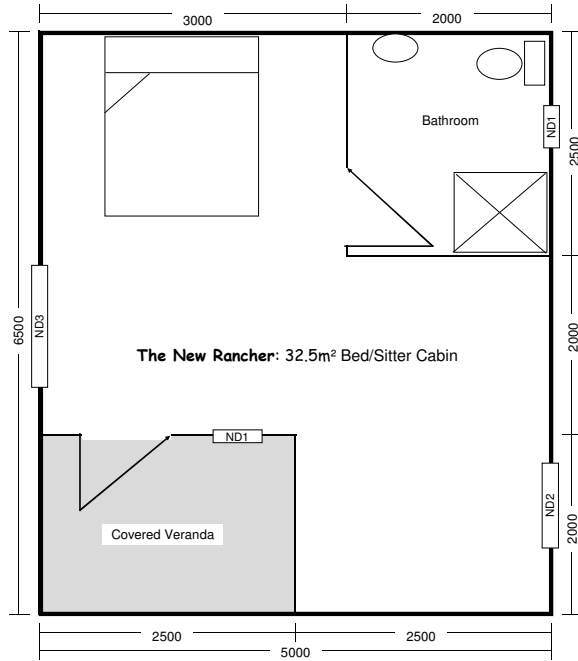
STANDARD TIMBER HOMES SHELL PRICES - INCL VAT			OUR SHELLS INCLUDE THE FOLLOWING:	
Backpacker	21m <sup>2</sup> One Room Cabin	R 35,885.00	<b>The Base:</b>	A post and bearer stilted timber base lifts the building off ground level to a maximum floor height of 1.5m. One set of steps is included.
New Rancher	32.5m <sup>2</sup> Bed Sitter Cabin	R 48,310.00	<b>The Floor:</b>	Inside the building is 22mm thick tongue and groove pine flooring, unpainted. The veranda, or deck, floors are 22mm thick treated pine decking, painted as per the outside of the building.
Bushvelder	39m <sup>2</sup> One bedroom Cabin	R 57,513.40	<b>The Walls:</b>	The walls are standard 2.4m high with knotty pine vertical tongue and groove cladding fixed to horizontal timber beams. The exterior of the walls is coated. Inside the building is not painted. The partition walls are to roof height and are also one skin of knotty pine cladding.
Hikers Cottage	52m <sup>2</sup> Two bedroom Cabin	R 72,621.20		Exterior wall cladding can be upgraded, please see below.
New Mountain	54m <sup>2</sup> Two bedroom Timber Home	R 81,147.00	<b>The Roof:</b>	The roof is corrugated iron roof sheets, unpainted, on timber beams from gable to gable.
Lowveld Lodge	72m <sup>2</sup> Three bedroom Timber Home	R 99,230.00		We offer upgrade to Chromodek cloured roof sheets
The Eland	104m <sup>2</sup> Four bedroom Timber Home	R 136,261.40	<b>The Doors:</b>	The external door is a Meranti single panel door, in a pine frame with a three lever lock.
The Impala	78m <sup>2</sup> Three Bedroom Timber Home	R 103,040.40		The internal doors are standard hollow core doors in a pine frame, not painted, with a two lever lock.
Work Station	54m <sup>2</sup> Three Office Building	R 79,115.00	<b>The Windows:</b>	The windows are pine framed cottage pane windows, with glass.
Kudu	95m <sup>2</sup> Three bed, two bathroom Timber Home	R 133,812.00	<p>The shells can be upgraded as per the list of upgrades below. You can add more windows and doors, add a ceiling, change the exterior wall cladding and much more. Please talk to one of our sales consultants for more information on any of the options or to get a formal quote. The shell price includes VAT at 14% and the construction of the unit. Delivery charges do apply subject to distance and size of load</p> <p>No plumbing, sanitary ware, electrical fittings or wiring included.</p>	
The Kaapsehoop	91m <sup>2</sup> Two Bedroom Timber Home	R 117,827.40		
The Classroom	52m <sup>2</sup> Open Plan Classroom with roof trusses	R 72,797.60		

## UPGRADE OPTIONS

	Ceiling inside the building	upgrade to Chromodek coloured roof	Upgrade to Roof Trusses	Internal dry wall lining - double wall	Internal k/pine double wall lining	Flat horizontal external wall cladding	Log profile external wall cladding	Chromodek external wall cladding	Handiplank external wall cladding	Raise to 2.4m off ground level
Backpacker	R 2,754.00	R 1,045.30	R 4,320.00	R 8,316.00	R 9,504.00	R 1,261.03	R 5,610.14	R 9,019.60	R 10,503.53	R 4,688.00
New Rancher	R 4,675.00	R 1,572.78	R 6,625.00	R 11,550.00	R 13,200.00	R 1,711.43	R 7,746.69	R 3,713.47	R 14,680.57	R 6,105.00
Bushvelder	R 5,759.60	R 1,881.53	R 7,964.80	R 14,112.00	R 16,128.00	R 2,287.54	R 8,858.56	R 4,452.28	R 16,446.15	R 6,934.40
Hikers Cottage	R 7,588.80	R 2,508.71	R 10,598.40	R 17,304.00	R 19,776.00	R 2,911.54	R 10,238.56	R 5,328.28	R 18,816.15	R 8,619.20
New Mountain	R 8,466.00	R 2,613.24	R 11,172.00	R 19,068.00	R 21,792.00	R 3,387.43	R 11,215.37	R 5,917.53	R 20,287.36	R 10,780.00
Lowveld Lodge	R 11,526.00	R 3,484.32	R 14,952.00	R 23,226.00	R 26,544.00	R 4,054.06	R 13,392.98	R 7,069.94	R 24,389.77	R 13,120.00
The Eland	R 17,625.60	R 5,017.43	R 21,772.80	R 33,054.00	R 37,776.00	R 6,440.57	R 17,455.40	R 9,943.60	R 30,431.38	R 17,238.40
The Impala	R 13,219.20	R 3,484.32	R 15,350.40	R 25,032.00	R 28,608.00	R 4,634.06	R 13,804.98	R 7,593.94	R 24,581.77	R 13,868.80
Work Station	R 8,670.00	R 2,613.24	R 11,220.00	R 19,950.00	R 22,800.00	R 3,441.72	R 11,551.37	R 6,095.50	R 21,082.02	R 8,900.00
Kudu	R 15,789.60	R 4,599.31	R 19,872.00	R 29,820.00	R 34,080.00	R 5,516.57	R 16,531.40	R 9,019.60	R 29,507.38	R 17,519.20
The Kaapsehoop	R 13,219.20	R 4,390.25	R 18,532.80	R 24,990.00	R 28,560.00	R 4,712.57	R 14,215.40	R 7,711.60	R 25,211.38	R 15,553.60
The Classroom	R 8,812.80	R 2,508.71	R 0.00	R 12,096.00	R 13,824.00	R 1,423.54	R 8,750.56	R 3,840.28	R 17,328.15	R 8,619.20

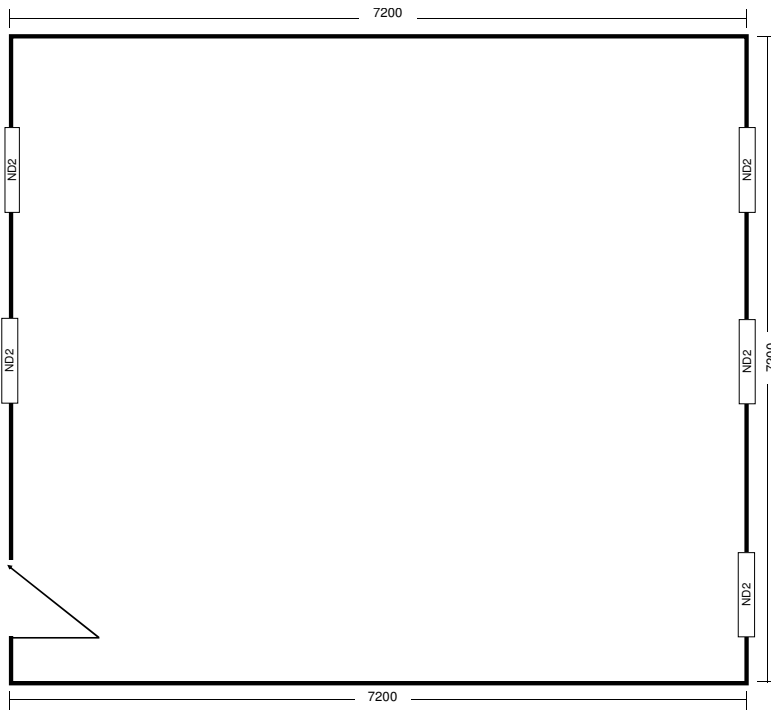


**The Backpacker:** 21m<sup>2</sup> One Room Cabin

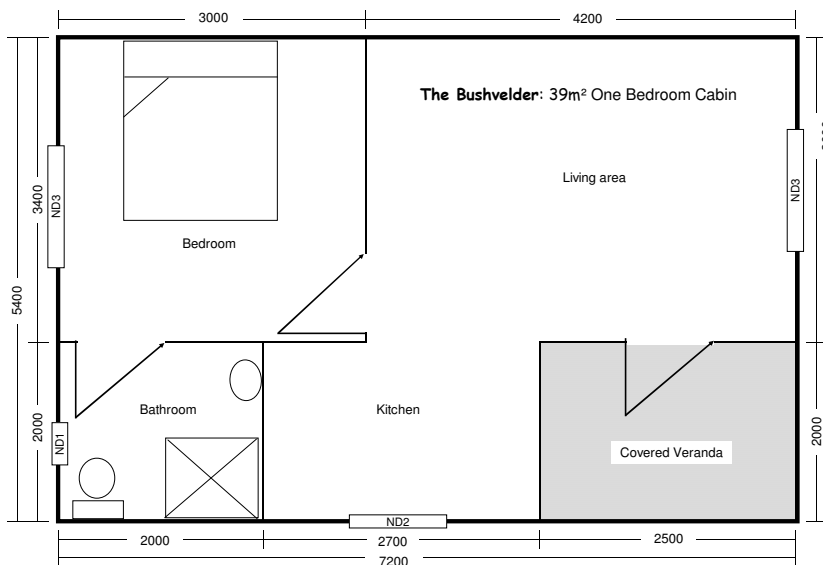


**The New Rancher:** 32.5m<sup>2</sup> Bed/Sitter Cabin

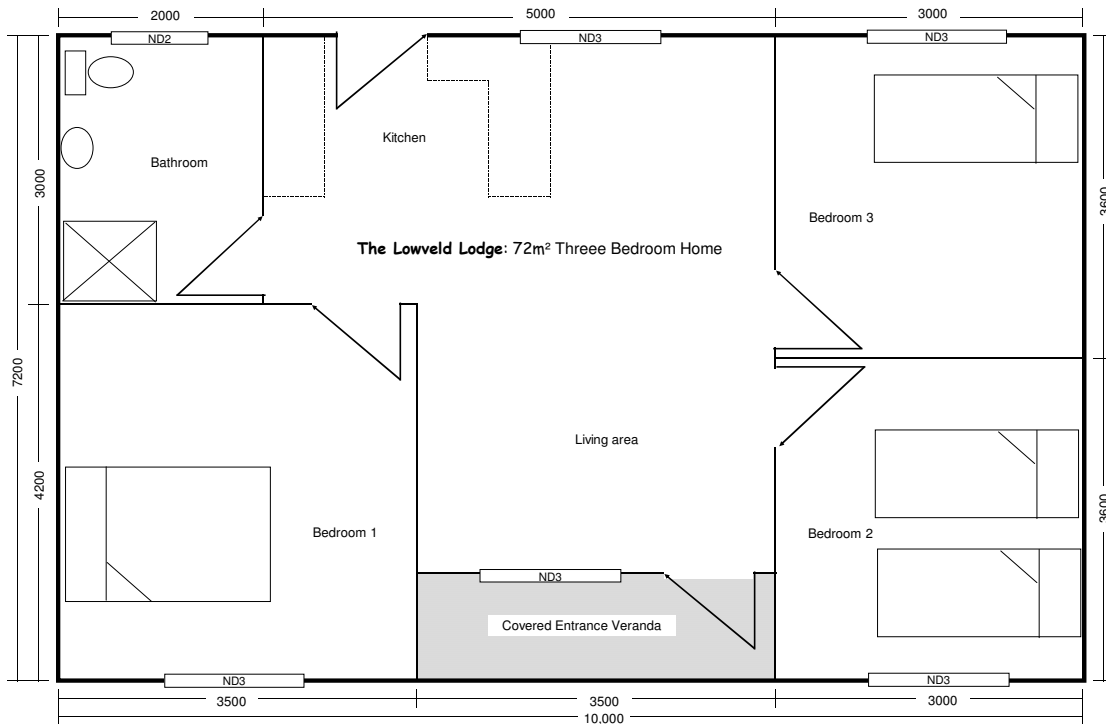
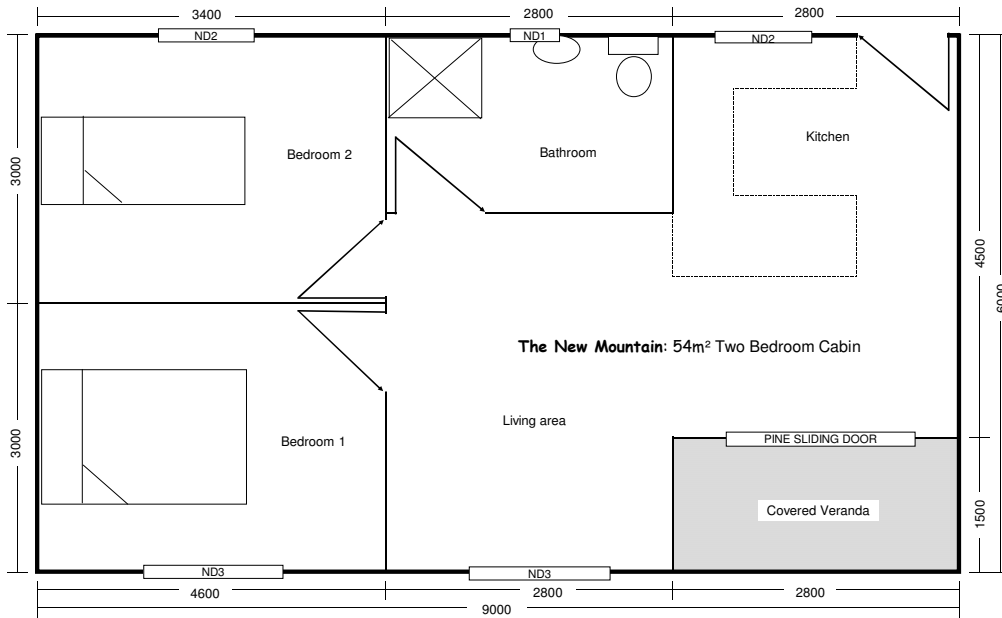
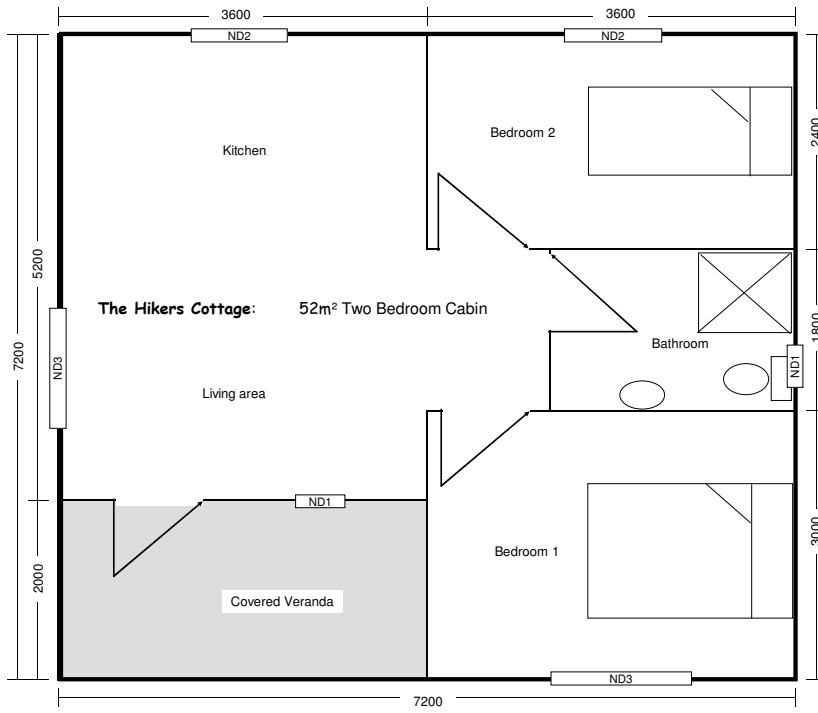
**Classroom:** 52m<sup>2</sup> 7.2 x 7.2m Open Plan with roof trusses and framed walls



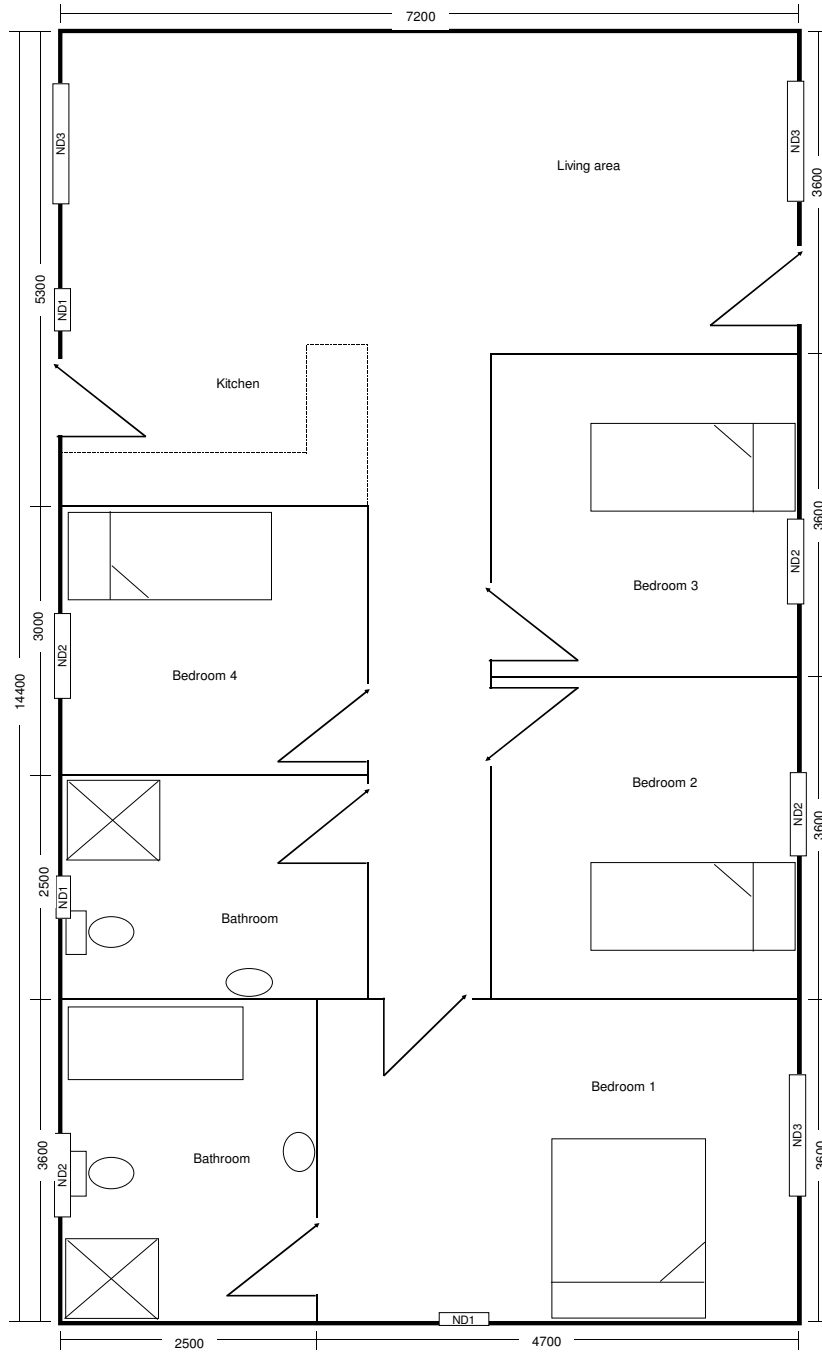
*Please note that the furniture and sanitary ware shown in the layouts are for illustration purposes and are not included in the buildings.*



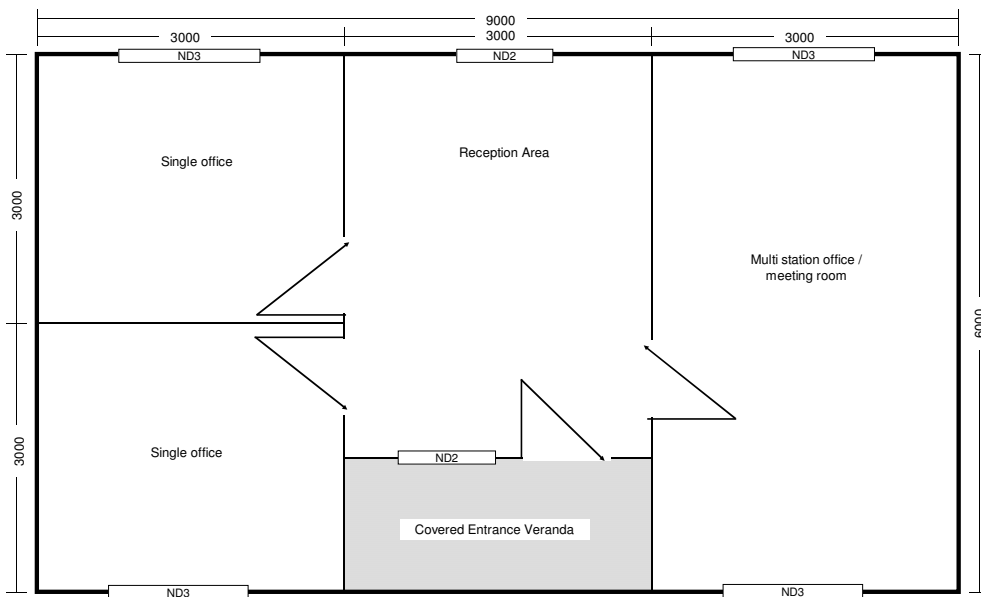
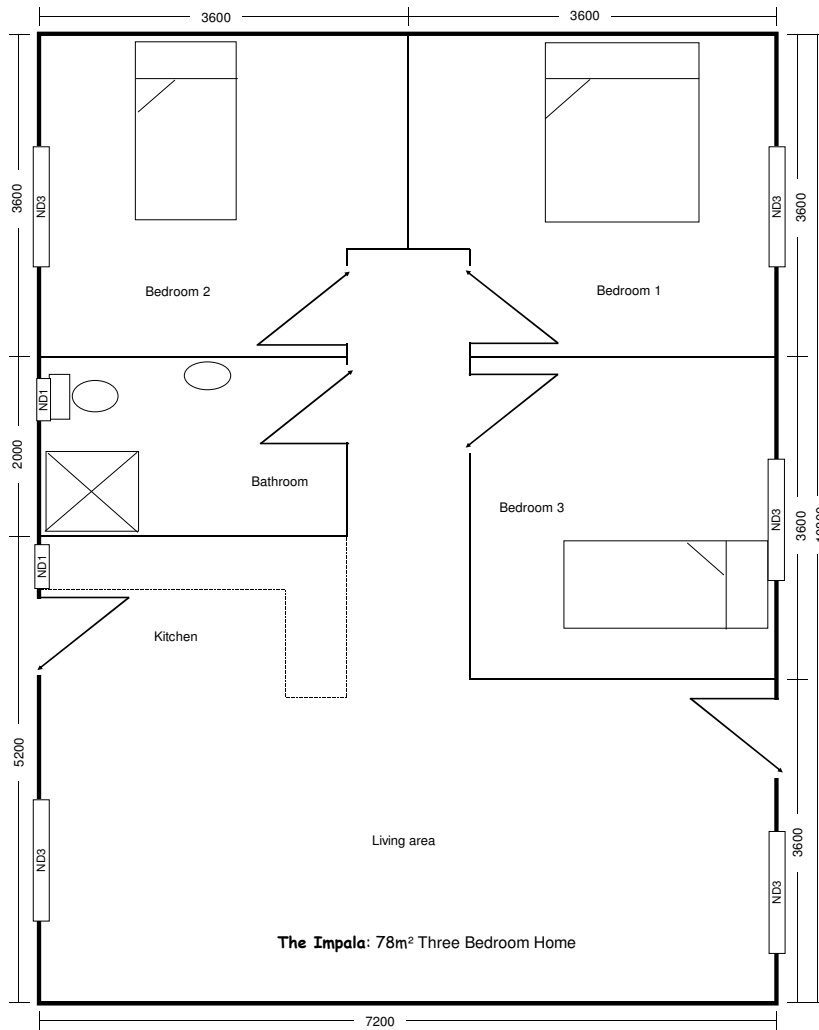
**The Bushvelder:** 39m<sup>2</sup> One Bedroom Cabin



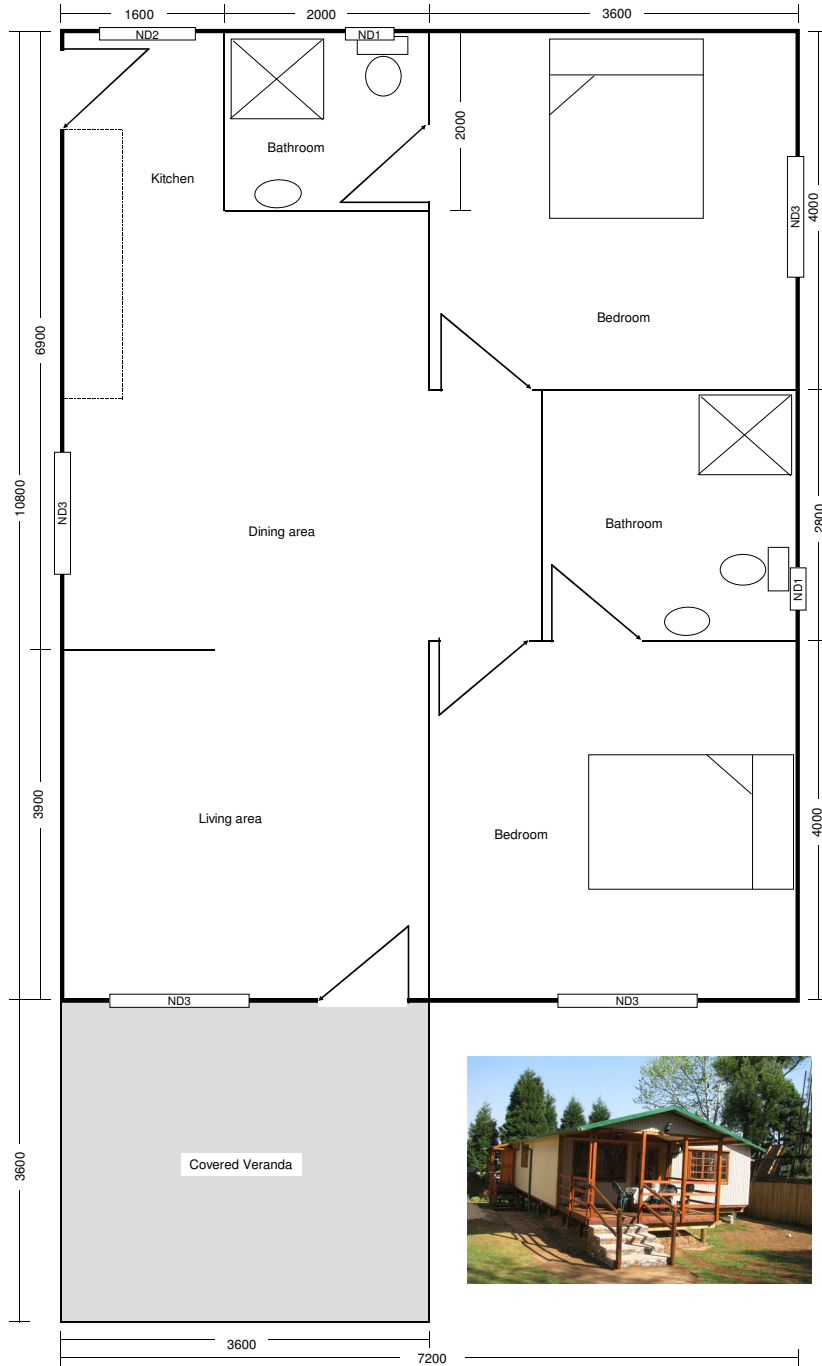
The Eland: 104m<sup>2</sup> Four Bedroom Home



Please note that the furniture and sanitary ware shown in the layouts are for illustration purposes and are not included in the buildings.

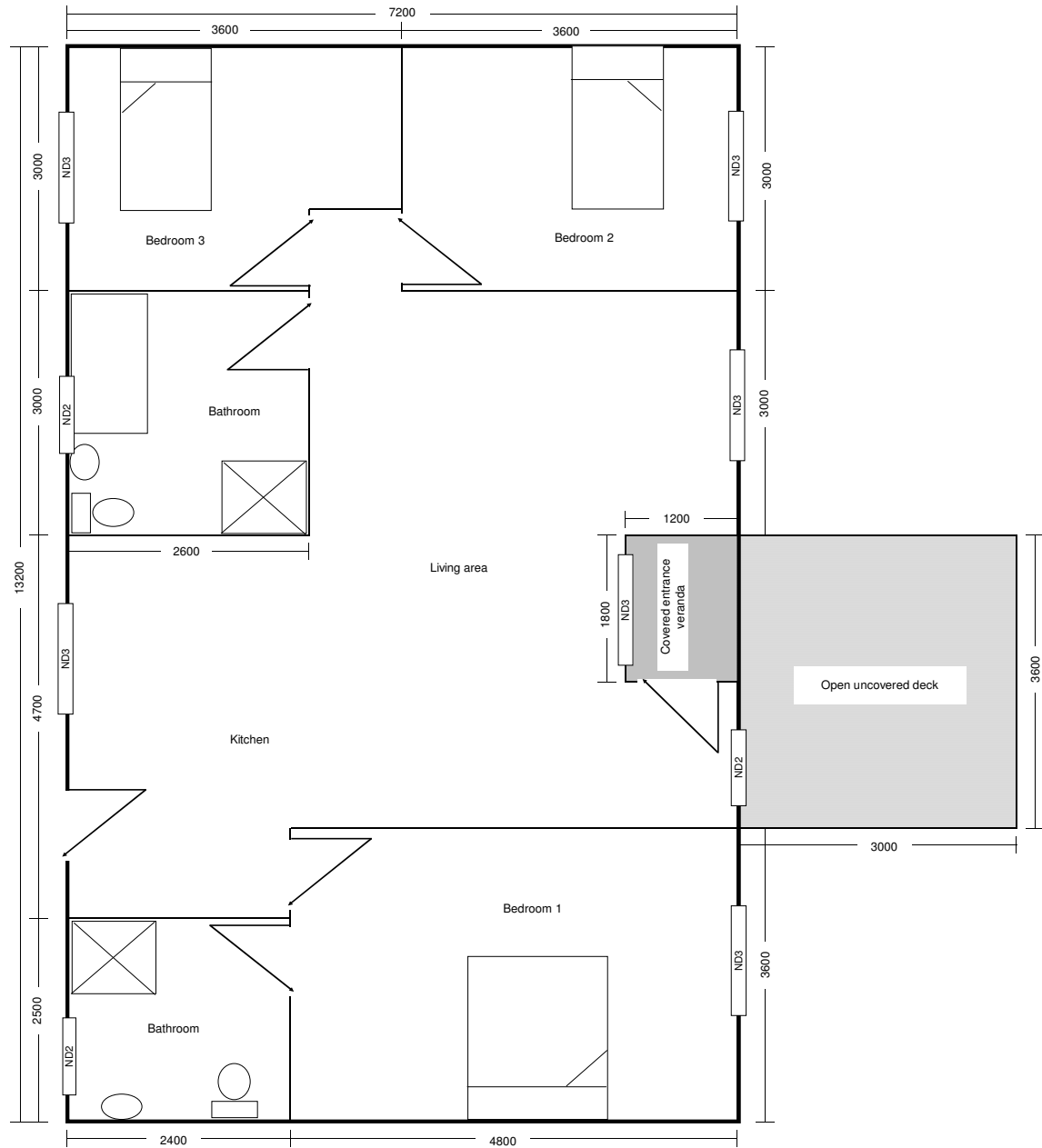


The Work Station: 54m<sup>2</sup> Three Office Building



**The Kaapsehoop: 91m<sup>2</sup> Two Bedroom Home**

Please note that the furniture and sanitary ware shown in the layouts are for illustration purposes and are not included in the buildings.



**The Kudu: 95m<sup>2</sup> Three bedroom Home with 10.8m<sup>2</sup> uncovered deck**