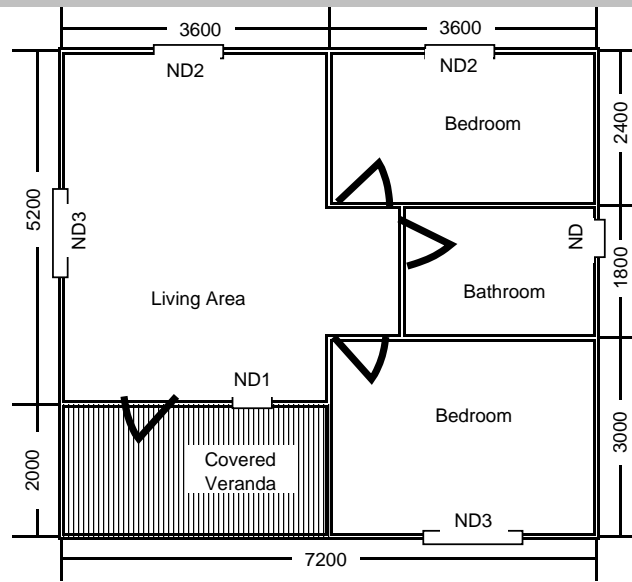


The Bushvelder
39m² One bedroom Cabin

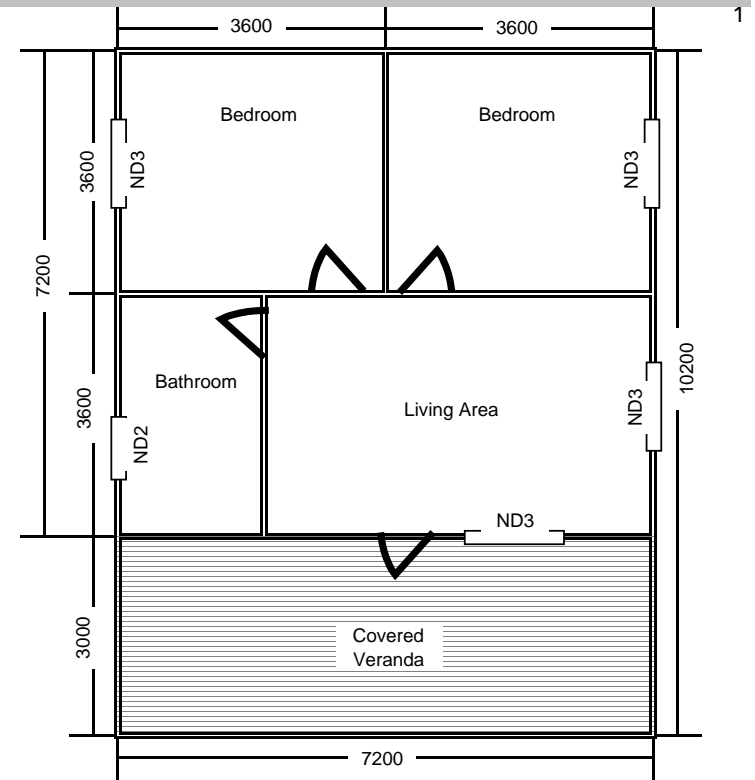
Building Shell Price	R 51,470.00
Optional ceiling	R 5,420.00
Optional double wall lining	R 12,096.00
Building Shell Price	<u>R 68,986.00</u>

Prices include vat at 14%



The Hikers
52m² Two bedroom Cabin

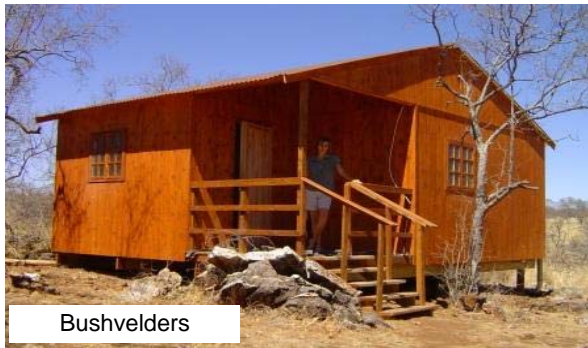
Building Shell Price	R 64,550.00
Optional ceiling	R 7,175.00
Optional double wall lining	R 14,760.00
Building Shell Price	<u>R 86,485.00</u>



The Mountaineer
74m² Two bedroom Cabin

Building Shell Price	R 84,210.00
Optional ceiling	R 8,295.00
Optional double wall lining	R 15,550.00
Building Shell Price	<u>R 108,055.00</u>

Cabins



Bushvelders



Hikers

Tel: (013) 755 2408

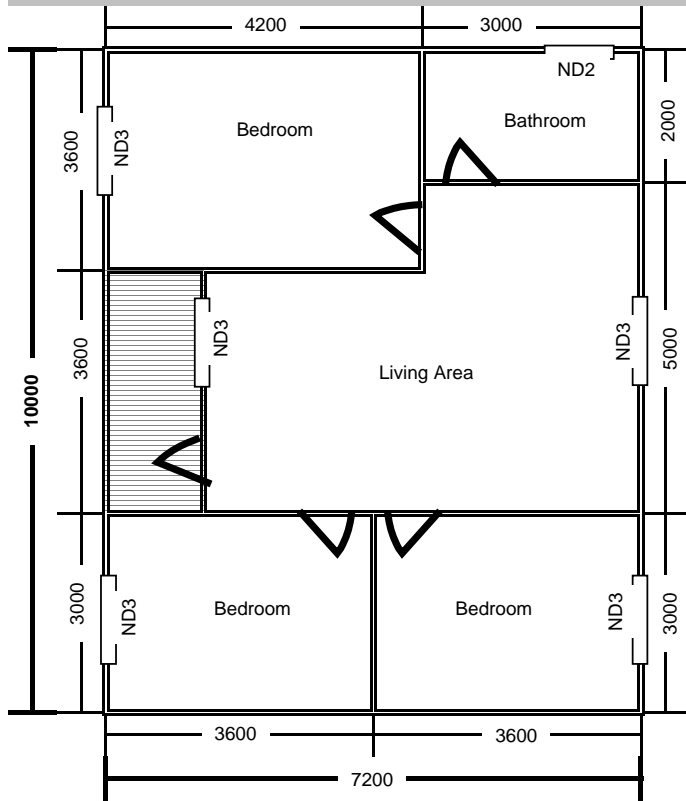
Fax: (013) 752 4890

email: brollie@timberco.co.za

WENDY LANE CC

01 June 2009





The Lowveld Lodge
72m² Three bedroom Cabin

Building Shell Price	R 86,560.00
Optional ceiling	R 10,680.00
Optional double wall lining	R 19,910.00
Building Shell Price	<u>R 117,150.00</u>

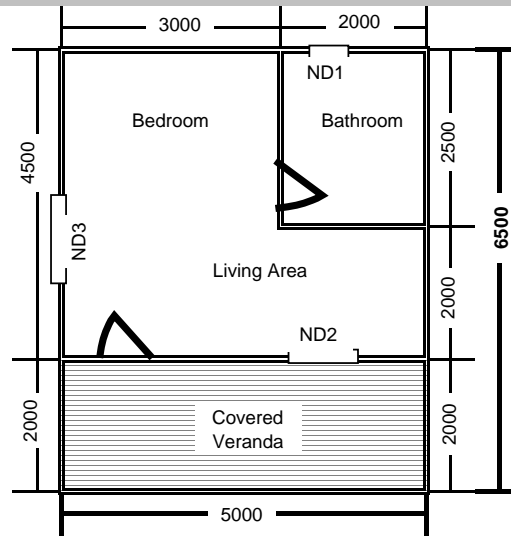
WENDY LANE CC



Tel: (013) 755 2408

Fax: (013) 752 4890

email: brollie@timberco.co.za



The Rancher
32.5m² Bed/Sitter Cabin

Building Shell Price	R 41,280.00
Optional ceiling	R 3,600.00
Optional double wall lining	R 8,460.00
Building Shell Price	<u>R 53,340.00</u>

Prices include vat at%

The Backpacker
21m² One Room Cabin

Building Shell Price	R 31,920.00
Optional ceiling	R 2,520.00
Optional double wall lining	R 7,020.00
Building Shell Price	<u>R 41,460.00</u>

What is included in a Cabin?

- * Post and bearer timber base to lift the building off ground level to a maximum of 1.5m . One set of steps included.
- * Floor inside the building is 22mm T & G pine, not painted. The veranda floors are 22mm thick treated pine decking, painted as per the outside of the building.
- * Walls are 2.4m high and are knotty pine vertical pine cladding fixed to horizontal timber beams. Outside of the walls are coated. Inside the building not painted.
- * Roof is corrugated iron roof sheets on timber purlins from gable to gable. Roof sheets are not painted.
- * External door is a Meranti panel door, in a pine frame. Internal doors are standard hollow core doors in a pine frame and are not painted.
- * Windows are pine framed cottage pane windows - glazed. Sizes and quantities as per layout drawings.
- * No plumbing, sanitary ware, electrical fittings or wiring included.

Ceiling:

6.4mm Rhinoboard ceiling follows the roof line, painted with two coats of white PVA paint. Sisolation between boards and roof sheets as part of the ceiling. No ceiling under veranda roofs.

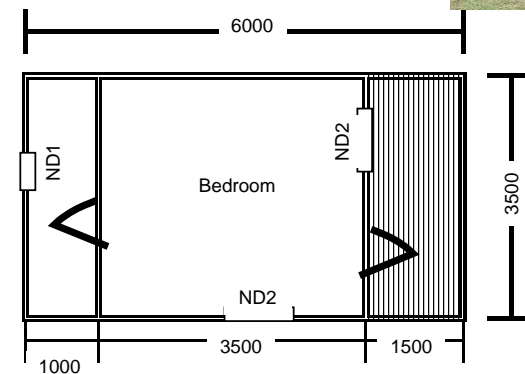
Double wall lining:



General Site Accommodation



Backpackers



01 June 2009